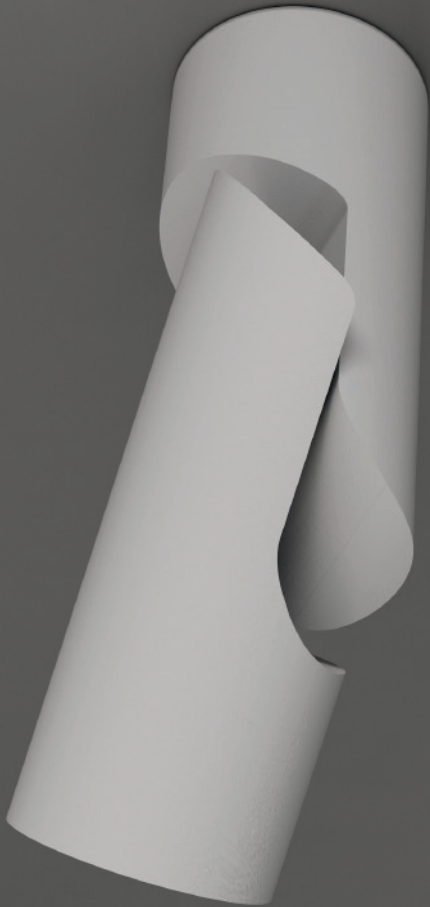


ZARlight

PRODUCT CATALOG
2022 / 2023



ZARlight

INDEX

INTERIOR

2-21
TRACK MAGNETIC SYSTEM

22-49
CEILING SURFACE

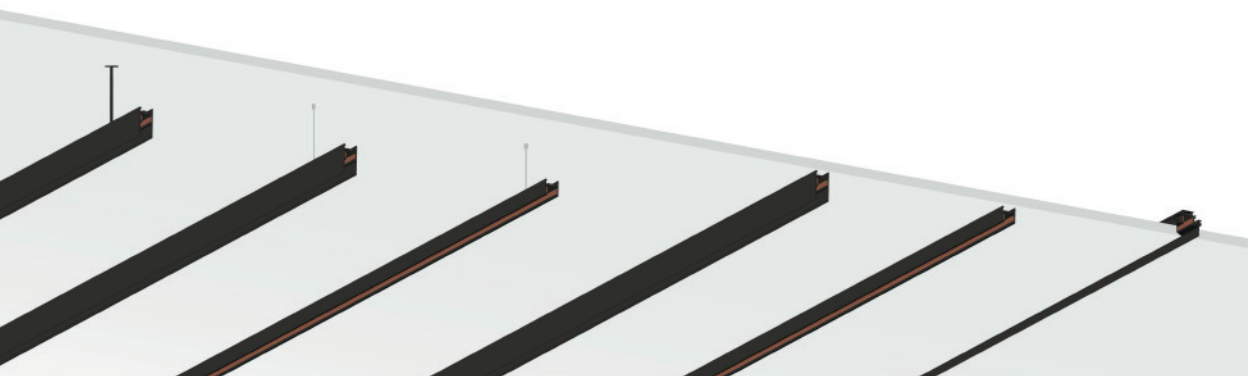
50-93
CEILING RECESSED

94-99
WALL RECESSED

EXTERIOR

100-101
CEILING SURFACE

103-105
WALL SURFACE



GALAXY

48V Track Magnetic System

TRACKS



GALAXY-SURFACE 23 LOW

Surface mounted track of 29 mm height, also available for suspension mounted.

2 m (29 x 26 x 2000 mm)

033386B

3 m (29 x 26 x 3000 mm)

033387B



GALAXY-TRIMLESS 23A

Recessed mounted track of standard height, fits to 9~25mm ceiling.

2 m (50 x 54 x 2000 mm)

033392B

3 m (50 x 54 x 3000 mm)

033393B



GALAXY-SURFACE 23

Surface mounted track of 54mm standard height, also available for suspension mounted.

2 m (54 x 26 x 3000 mm)

033399B

2 m (54 x 26 x 3000 mm)

033400B



ACCESSORY

SURFACE 23 LOW



GALAXY L-CC
Corner set for surface mount at 90° (vertical option), for SURFACE 23 LOW track, include Galaxy-SL1 CP connecting piece 4pcs.(2 sets)

033388B



GALAXY L-CW
Corner set for surface mount at 90°(ceiling to wall option) for SURFACE 23 LOW track, include Galaxy-SL1 CP connecting piece 4pcs (2 sets)

033389B



GALAXY-SL1 CP
Connecting piece for SURFACE 23 LOW track, 2pcs/set

033390B



GALAXY-SL END CAP
End cap for SURFACE 23 LOW track, 2pcs/set

033391B

SURFACE 23



GALAXY-CC
Corner set for surface mount at 90° for SURFACE 23 track, include Galaxy-S1 CP connecting piece 2pcs

033404B



GALAXY-CW
Corner set for surface mount at 90°(ceiling to wall option) for SURFACE 23 track, include Galaxy-S1 CP connecting piece 2pcs

033405B



GALAXY-S1 CP
Connection piece for SURFACE 23 track, 2pcs/set

033406B



GALAXY-S END CAP
End cap for SURFACE 23 track, 2pcs/set

033407B



GALAXY-SF BOX-200W
Driver box, includes SELF 200W 48V power supply, use for surface mounting, includes 1pce G-EF, the drive has UL certification, the power is 150W when running at 120V. L=500 mm

033412B



GALAXY-SP BOX-200W
Driver box, include SELF 200W 48V power supply, use for SURFACE 23 and SURFACE 23 LOW track, L=500 mm

033413B



Suspension 1.5 m with cable for SURFACE 23 and SURFACE 23 LOW track

033408B



Suspension 1.5 m for SURFACE 23 and SURFACE 23 LOW track

033409B

TRIMLESS 23A



GALAXY-CC

Corner set for surface mount at 90° (vertical option), for TRIMLESS 23A track, include Galaxy-T2 CP connecting piece 4pcs. (2 sets)

033394B



GALAXY-CW

Corner set for surface mount at 90° (ceiling to wall option) for TRIMLESS 23A track, include Galaxy-T2 CP connecting piece 4pcs. (2 sets)

033395B



GALAXY-T1

Fixation set for TRIMLESS 23A track, 2pcs/set, every 2 m track use 4-5 pairs to fix

033396B



GALAXY-T2-CP

Connecting piece for TRIMLESS 23A track, 2pcs/set

033397B



GALAXY-T-END-CAP

End cap for TRIMLESS 23A track, 2pcs/set

033398B



GALAXY-T23B CC+

„+“ Shape set for TRIMLESS 23A track, include G-T2 CP connecting piece 8pcs.

033410B



GALAXY-T23B CCT

„T“ Shape set for TRIMLESS 23A track, include G-T2 CP connecting piece 6pcs.

033411B



GALAXY-EF

End feed 9501. Power incoming end for SURFACE and TRIMLESS track, to connect with 48V driver or DALI driver

033401B



GALAXY-JC

Joining connector 9503 for SURFACE and TRIMLESS track, use for track linear connection

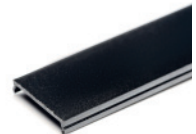
033402B



GALAXY-JC L

Connector for track „L“ shape connection for SURFACE and TRIMLESS track, middle cable 165mm

033403B



Plastic cover for GALAXY track, can fit with SURFACE 23 or TRIMLESS 23A track, L=2000 mm

033385B



Power supply Meanwell LPV-60-48V

033-60Z



Power supply Meanwell LPV-100-48V

033-100Z



Power supply Meanwell LPV-150-48V

033-150Z

Power supply Meanwell HLG-240H-36V/42V/48V

033-240Z

Power supply Meanwell HLG-320H-36V/42V/48V

033-320Z



GALAXY S40 1x6,6W

48V Track Magnetic System

LED

Technical parameters:

Light source/Power:

LED CITIZEN CLU701, 1x6.6 W

Lumens/CRI/Beam angle:

668 lm/CRI 90/35 reflector

IP rating: IP20

Power supply: 48V-DC

Material: Metal (aluminum) + plastic

Dimensions:

123 x 167 mm, Ø40x70mm

Color temperature

3000K

Available colors

Black (033370B)



GALAXY S40x2 2x6,6W

48V Track Magnetic System

LED

Technical parameters:

Light source/Power:
LED CITIZEN CLU701, 2x6.6 W
Lumens/CRI/Beam angle:
2x668 lm/CRI 90/35 reflector
IP rating: IP20
Power supply: 48V-DC
Material: Metal (aluminum) + plastic

Dimensions:

123 x 167 mm, Ø40x70mm

Color temperature

3000K (033371B)
4000K (033425B)

Available colors

Black



GALAXY S40L 1x11W

48V Track Magnetic System

LED

Technical parameters:

Light source/Power:
LED CITIZEN CLU701, 1x11 W
Lumens/CRI/Beam angle:
1011 lm/CRI 90/33 reflector
IP rating: IP20
Power supply: 48V-DC
Material: Metal (aluminum) + plastic

Dimensions:

158 x 167 mm, Ø40x105 mm

Color temperature

3000K (033372B)
4000K (033414B)

Available colors

■ Black



GALAXY S62 FOCUS 13W

48V Track Magnetic System

LED

Technical parameters:	Dimensions:	Color temperature	Available colors
Light source/Power: LED BRIDGELUX V6HD 1x12.9W	165 x 167 mm, Ø62x112mm	3000K (033423B)	Black
Lumens/CRI/Beam angle: 1160 lm/CRI 90/12-46 reflector		4000K (033424B)	
IP rating: IP20			
Power supply: 48V-DC			
Material: Metal (aluminum) + plastic			



GALAXY CMA 5 AIR-8W 5×1.5W

48V Track Magnetic System
LED

Technical parameters:

Light source/Power:
LED OSLOM SSL 150, 5×1.5W
Lumens/CRI/Beam angle:
755 lm/CRI 90/38 reflector
IP rating: IP20
Power supply: 48V-DC
Material: Metal (aluminum)

Dimensions:

167 x 115 x 22 mm

Color temperature

 3000K

Available colors

 Black (033419B)



GALAXY WALL WASH-11W

48V Track Magnetic System

LED

Technical parameters:

Light source/Power:

LED OSLOM SSL, 5x2.1W

Lumens/CRI/Beam angle:

1100 lm/CRI 90/30 reflector

IP rating: IP20

Power supply: 48V-DC

Material: Metal (aluminum) + plastic

Dimensions:

48 x 212 x 22 mm

Color temperature

3000K

Available colors

Black (033373B)



GALAXY CM G2 8W

48V Track Magnetic System

LED

Technical parameters:

Light source/Power:

LED OSOLON SSL, 5x1,5W

Lumens/CRI/Beam angle:

810 lm/CRI 90/38 reflector

IP rating: IP20

Power supply: 48V-DC

Material: Metal (aluminum) + plastic

Dimensions:

43 x 175 x 22 mm

Color temperature

3000K (033374B)

4000K (033422B)

Available colors

■ Black



GALAXY CM G2 10-15W

48V Track Magnetic System

LED

Technical parameters:

Light source/Power:

LED OSLOM SSL, 10x1,5W

Lumens/CRI/Beam angle:

1620 lm/CRI 90/38 reflector

IP rating: IP20

Power supply: 48V-DC

Material: Metal (aluminum) + plastic

Dimensions:

43 x 266 x 22 mm

Color temperature

3000K (033375B)

4000K (033415B)

Available colors

Black



GALAXY CMA 5-8W

48V Track Magnetic System

LED

Technical parameters:

Light source/Power:

LED OSLOM SSL, 5x1,5W

Lumens/CRI/Beam angle:

755 lm/CRI 90/38 reflector

IP rating: IP20

Power supply: 48V-DC

Material: Metal (aluminum) + plastic

Dimensions:

100 x 95 x 22 mm

Color temperature

3000K

Available colors

Black (033376B)



GALAXY CMA 10-15W

48V Track Magnetic System

LED

Technical parameters:

Light source/Power:

LED OSLOM SSL, 10x1,5W

Lumens/CRI/Beam angle:

1510 lm/CRI 90/38 reflector

IP rating: IP20

Power supply: 48V-DC

Material: Metal (aluminum) + plastic

Dimensions:

100 x 186 x 22 mm

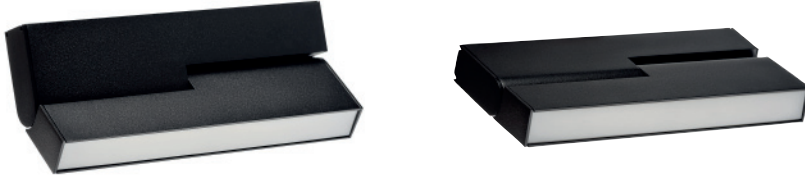
Color temperature

3000K (033377B)

4000K (033416B)

Available colors




■ Black



GALAXY CMA AMBIENT

48V Track Magnetic System

LED

Technical parameters:	Dimensions:	Color temperature	Available colors
Light source/Power: LED BRIDGELUX 2835 SMD, 1x6.4W	100 x 186 x 22 mm	 3000K (033378B)	 Black
Lumens/CRI/Beam angle: 996 lm/CRI 90 (033378B) 1056 lm/CRI 90 (033417B)		 4000K (033417B)	
IP rating: IP20			
Power supply: 48V-DC			
Material: Metal (aluminum) + plastic			



GALAXY AMBIENT-6W

48V Track Magnetic System

LED

Technical parameters:

Light source/Power:
LED BRIDGELUX 2835 SMD 1x6.3W
Lumens/CRI/Beam angle:
700 lm/CRI 90
IP rating: IP20
Power supply: 48V-DC
Material: Metal (aluminum)

Dimensions:

43 x 285 x 22 mm

Color temperature

3000K (033420B)
4000K (033421B)

Available colors

Black



GALAXY AMBIENT-13W

48V Track Magnetic System

LED

Technical parameters:

Light source/Power:
LED BRIDGELUX 2835 SMD,
1x12,6W

Lumens/CRI/Beam angle:
1550 lm/CRI 90 (033379B)
1662 lm/CRI 90 (033418B)

IP rating: IP20

Power supply: 48V-DC

Material: Metal (aluminum) + plastic

Dimensions:

43 x 565 x 22 mm

Color temperature

 3000K (033379B)

 4000K (033418B)

Available colors

 Black





GALAXY T40-250 1x6,6W

48V Track Magnetic System

LED

Technical parameters:

Light source/Power:
LED CITIZEN CLU701, 1x6.6W
Lumens/CRI/Beam angle:
668 lm/CRI 90/34 reflector
IP rating: IP20
Power supply: 48V-DC
Material: Metal (aluminum)

Dimensions:

1500 x 167 mm, Ø40x250 mm

Color temperature

3000K

Available colors

Black (033380B)



GALAXY T2646 PLUS 1x6,6 W

48V Track Magnetic System

LED

Technical parameters:

Light source/Power:
LED CITIZEN CLU701, 1x6.6W
Lumens/CRI/Beam angle:
668 lm/CRI 90/34 reflector
IP rating: IP20
Power supply: 48V-DC
Material: Metal (aluminum)

Dimensions:

1070 x 167 mm, Ø46x280 mm

Color temperature

3000K

Available colors

Black (033381B)



ILAN 9W DIM

Ceiling Surface

LED



Technical parameters:

Light source/Power:
LED Array 1x8.9W
Lumens/CRI/Beam angle:
1135 lm/CRI 80/48° reflector
IP rating: IP20
Power supply:
ACTEC 12W, dimmable, 500mA
Material: Metal (aluminum)

Dimensions:

Ø65mm*H200mm

Color temperature

3000K

Available colors

Matt White (03332W)
 Matt Black (03332B)





DANNY MINI AIR-GU10

Ceiling Surface

GU10

Technical parameters:

Light source/Power:
GU10, 1×7.5W (not included)
IP rating: IP20
Power supply: not required
Material: Metal (aluminum)

Dimensions:

Ø60mm*H134mm

Available colors

- Matt White (03334W)
- Matt Black (03334B)





UNIVERSAL G2-9W DIM

Ceiling Surface
LED

Technical parameters:

Light source/Power:
LED Bridgelux V8 Array
1x8.9W
Lumens/CRI/Beam angle:
1135 lm/CRI 80/48° reflector
IP rating: IP20
Power supply:
ACTEC 12W, dimmable, 500mA
Material: Metal (aluminum)

Dimensions:

Ø100mm*H103mm

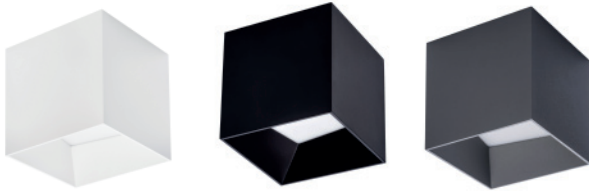
Color temperature

3000K

Available colors

- Matt White (03335W)
- Matte White /Matte Black (03335W/B)
- Matt Black (03335B)





SKY OK ED 10W DIM

Ceiling Surface

LED

Technical parameters:

Light source/Power:
LED Philips Luxeon 3030 2D
1x9.6W
Lumens/CRI/Beam angle:
1120 lm/CRI 80
IP rating: IP44
Power supply:
ACTEC 12W, dimmable, 500mA
Material: Metal (aluminum)

Dimensions:

105mm*105mm*H105mm

Color temperature

3000K

Available colors

□ Matt White (03333W)
■ Matt Black (03333B)
■ Matt Gray (03333G)





VITALITY EXTRA-10W DIM

Ceiling Surface

LED

Technical parameters:

Light source/Power:

LED Bridgelux V8H Array
1×10.4W

Lumens/CRI/Beam angle:

941 lm/CRI 90/42° reflector

IP rating: IP20

Power supply:

ACTEC 15W, dimmable, 500mA

Material: Metal (aluminum) + plastic

Dimensions:

Ø120mm*81mm

Color temperature

■ 3000K

Available colors

□ Matt White (03377W)

■ Matt Black (03377B)





VITALITY FIXED EXTRA-12W DIM U&D

Ceiling Surface
LED

Technical parameters:

Light source/Power:

LED Bridgelux V8H Array
1×10.4W

Lumens/CRI/Beam angle:

941 lm/CRI 90/42° reflector

IP rating: IP20

Power supply:

ACTEC 10W, dimmable, 500mA

Material: Metal (aluminum) + plastic

Dimensions:

Ø120mm*69mm

Color temperature

■ 3000K

Available colors

□ Matt White (03378W)

■ Matt Black (03378B)





URANUS 9W DIM

Ceiling Surface

LED

Technical parameters:

Light source/Power:

LED Array 1x8.9W

Lumens/CRI/Beam angle:

1135 lm/CRI 80/48° reflector

IP rating: IP20

Power supply:

SELF 15W, dimmable, 500mA

Material (frame): Metal (aluminum)

Dimensions:

Ø102mm*H84mm

Color temperature

3000K

Available colors

Matt White (03331W)

Matt Black (03331B)



HDL-5600-GU10

Ceiling Surface

GU10

Technical parameters:

Light source/Power:
GU10, 1×50W (not included)
IP rating: IP20
Power supply: not required
Material: Metal (aluminum)

Dimensions:

Ø196mm*H120mm

Available colors

- Matt White (03337W)
- Matt Black (03337B)
- Aluminium (03337A)



HDL-5601-GU10

Ceiling Surface

GU10

Technical parameters:

Light source/Power:
GU10, 1×50W (not included)
IP rating: IP20
Power supply: not required
Material: Metal (aluminum)

Dimensions:

96mm*96mm*H120mm

Available colors

- Matt White (03338W)
- Matt Black (03338B)
- Aluminium (03338A)



HDL-5602-GU10

Ceiling Surface

GU10

Technical parameters:

Light source/Power:
GU10, 2×50W (not included)
IP rating: IP20
Power supply: not required
Material: Metal (aluminum)

Dimensions:

98mm*180mm*H120mm

Available colors

- Matt White (03339W)
- Matt Black (03339B)
- Aluminium (03339A)



COURSE R DIM 9W

Ceiling Surface

LED

Technical parameters:

Light source/Power:
LED Bridgelux V8 Array
1x8.9W
Lumens/CRI/Beam angle:
1135 lm/CRI 80/48° reflector
IP rating: IP20
Power supply:
ACTEC 12W, dimmable, 500mA
Material: Metal (aluminum)

Dimensions:

Ø85mm*H93mm

Color temperature

3000K

Available colors

- Matt White (03360W)
- Matt Black (03360B)
- Matte White /Matte Black (03360W/B)





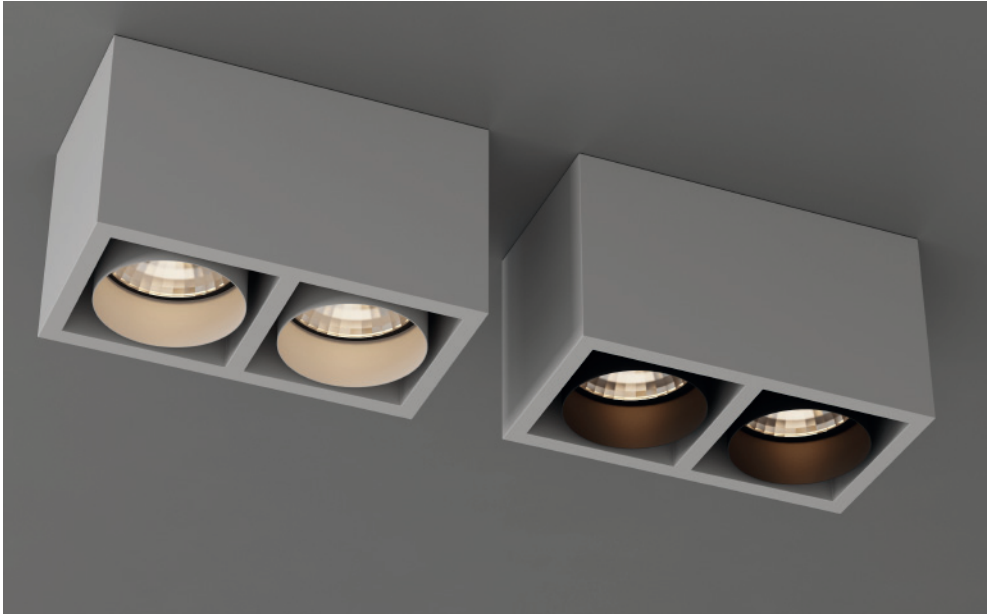
COURSE DIM 9W

Ceiling Surface

LED

Technical parameters:	Dimensions:	Color temperature	Available colors
Light source/Power: LED Bridgelux V8 Array 1x8.9W	85mm*85mm*H93mm	3000K	<ul style="list-style-type: none"> <input type="checkbox"/> Matt Gray (03361G) <input checked="" type="checkbox"/> Matt Gray/Matte Black (03361G/B) <input type="checkbox"/> Matte White (03361W) <input checked="" type="checkbox"/> Matte White/Matte Black (03361W/B)
Lumens/CRI/Beam angle: 1135 lm/CRI 80/48° reflector			
IP rating: IP20			
Power supply: ACTEC 12W, dimmable, 500mA			
Material: Metal (aluminum)			





COURSE 2 DIM 2x9W

Ceiling Surface

LED

Technical parameters:

Light source/Power:
LED Bridgelux V8 Array
2x8.9W
Lumens/CRI/Beam angle:
2*1135lm/CRI 80/48° reflector
IP rating: IP20
Power supply:
ACTEC 25W, dimmable, 500mA
Material: Metal (aluminum)

Dimensions:

162mm*85mm*93mm

Color temperature

3000K

Available colors

- Matte White (03370W)
- Matte White/Matte Black (03370W/B)





FASHION ED FIXED-GU10

Ceiling Surface

GU10

Technical parameters:

Light source/Power:
GU10, 1x50W (not included)
IP rating: IP20
Power supply: not required
Material: Metal (aluminum)

Dimensions:

94mm*94mm*94mm

Available colors

- Matte White (03365W)
- Matt Black (03365B)
- Matte White/Matte Black (03365W/B)





FASHION 2 ED FIXED-GU10

Ceiling Surface

GU10

Technical parameters:

Light source/Power:
GU10, 2×50W (not included)
IP rating: IP20
Power supply: not required
Material: Metal (aluminum)

Dimensions:

186mm*94mm*94mm

Available colors

- Matte White (03366W)
- Matt Black (03366B)
- Matte White/Matte Black (03366W/B)





FASHION ED G2-GU10

Ceiling Surface

GU10

Technical parameters:

Light source/Power:
GU10, 1×50W (not included)
IP rating: IP20
Power supply: not required
Material: Metal (aluminum)

Dimensions:

94mm*94mm*94mm

Available colors

- Matte White (03367W)
- Matt Black (03367B)
- Matte White/Matte Black (03367W/B)



FASHION 2 ED G2-GU10

Ceiling Surface

GU10

Technical parameters:

Light source/Power:
GU10, 2×50W (not included)
IP rating: IP20
Power supply: not required
Material: Metal (aluminum)

Dimensions:

186mm*94mm*94mm

Available colors

- Matte White (03368W)
- Matt Black (03368B)
- Matte White/Matte Black (03368W/B)



UNIVERSAL RD G2-14W DIM

Ceiling Recessed

LED



Technical parameters:

Light source/Power:
LED bridgelux V10 Array
1x13.8W
Lumens/CRI/Beam angle:
1474 lm/CRI 80/48° reflector
IP rating: IP20
Power supply:
HEP 15 W dimmable, 500mA
Material: Metal (aluminum)

Dimensions:

Ø100mm*H95mm
Mounting dimension:
Ø89mm

Color temperature

3000K

Available colors

- Matt White (03340W)
- Matt Black (03340B)
- Matte White/Matte Black (03340W/B)






COLD 1

Ceiling Recessed

LED

Technical parameters:	Dimensions:	Color temperature	Available colors
Light source/Power: LED OSLO Square 1x2W Lumens/CRI/Beam angle: 250 lm/CRI 90/48° reflector IP rating: IP20 Power supply: ACTEC 4 W, 700mA Material: Metal (aluminum)	44mm*44mm*H52mm Mounting dimension: 36mm*36mm	 3000K	<input checked="" type="checkbox"/> Matte White/Matte Black (03341W/B)



COLD 2

Ceiling Recessed

LED

Technical parameters:

Light source/Power:
LED OSLO Square 3x2W
Lumens/CRI/Beam angle:
750 lm/CRI 90/48° reflector
IP rating: IP20
Power supply:
Letaron 8 W, 700mA
Material: Metal (aluminum)

Dimensions:

90mm*44mm*H52mm
Mounting dimension:
83mm*36mm

Color temperature

3000K


Available colors

Matte White/Matte Black (03342W/B)



COLD 3

Ceiling Recessed
LED

Technical parameters:	Dimensions:	Color temperature	Available colors
Light source/Power: LED OSLO Square 5x2W Lumens/CRI/Beam angle: 1250 lm/CRI 90/48° reflector IP rating: IP20 Power supply: HEP 15W dimmable, 700mA Material: Metal (aluminum)	137mm*44mm*H52mm Mounting dimension: 130mm*36mm	 3000K	<input checked="" type="checkbox"/> Matte White/Matte Black (03343W/B)





HORN-GU10

Ceiling Recessed

GU10

Technical parameters:

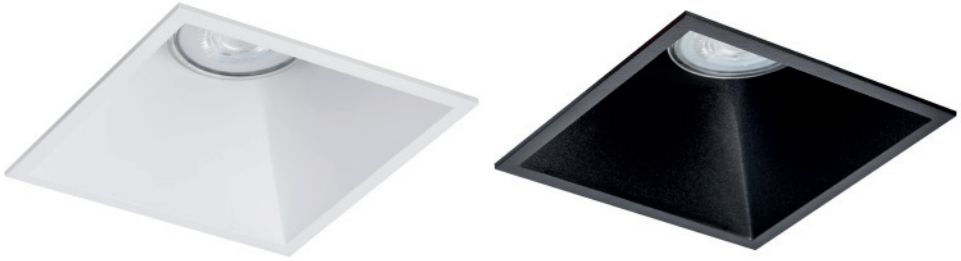
Light source/Power:
GU10, 1×50W (not included)
IP rating: IP20
Power supply: not required
Material: Metal (aluminum)

Dimensions:

Ø110mm*H170mm
Mounting dimension: Ø103mm

Available colors

Matt White (03344W)
 Matt Black (03344B)



HORN SQ-GU10

Ceiling Recessed

GU10

Technical parameters:

Light source/Power:
GU10, 1×50W (not included)
IP rating: IP20
Power supply: not required
Material: Metal (aluminum)

Dimensions:

110mm*110mm*H170mm
Mounting dimension: 103mm*103mm

Available colors

Matt White (03345W)
 Matt Black (03345B)



EVA MINI FIXED HIDE-9W DTW

Ceiling Recessed

LED

Technical parameters:

Light source/Power:
LED PROLIGHT OPTO PDSQ-10FVL
(DTW) 1×9.4W
Lumens/CRI/Beam angle:
1077 lm/CRI 90/48° reflector
IP rating: IP54
Power supply:
ACTEC 12W dimmable 500mA
Material: Metal (aluminum)

Dimensions:

Ø75mm*H95mm
Mounting dimension: Ø76mm

Color temperature

2000–3000K

Available colors

□ Matt White (03336W)
■ Matt Black (03336B)



EVA 9W

Ceiling Recessed

LED

Technical parameters:

Light source/Power:
LED Bridgelux V8 Array
1x8.9W
Lumens/CRI/Beam angle:
1135 lm/CRI 80/48° reflector
IP rating: IP20
Power supply:
Tridonic 10 W, 500mA
Material: Metal (aluminum)

Dimensions:

Ø92mm*102mm
Mounting dimension: Ø83mm

Color temperature

3000K

Available colors

□ Matt White (03346W)



MAKE WALLWASH-GU10

Ceiling Recessed

GU10

Technical parameters:

Light source/Power:
GU10, 1x50W (not included)
IP rating: IP20
Power supply: not required
Material: Metal (aluminum)

Dimensions:

92mm*92mm*H130mm
Mounting dimension: 83mm*83mm

Available colors

- Matt White (03347W)
- Matt Black (03347B)
- Matte White/Matte Black (03347W/B)



EVA WALLWASH-GU10

Ceiling Recessed

GU10

Technical parameters:

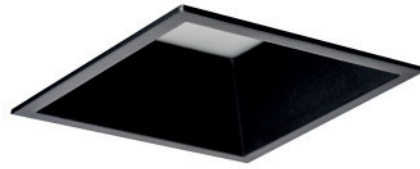
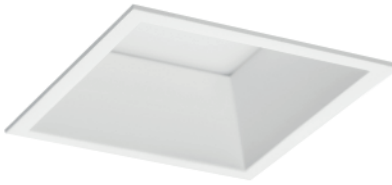
Light source/Power:
GU10, 1×50W (not included)
IP rating: IP20
Power supply: not required
Material: Metal (aluminum)

Dimensions:

Ø92mm*H130mm
Mounting dimension: Ø83mm

Available colors

- Matt White (03348W)
- Matt Black (03348B)
- Matte White/Matte Black (03348W/B)



X-SKY-10W

Ceiling Recessed

LED

Technical parameters:

Light source/Power:
LED Philips LUXEON 3030 2D
1x10W
Lumens/CRI/Beam angle:
1120 lm/CRI 80
IP rating: IP44
Power supply:
Tridonic 10 W, 500mA
Material: Metal (aluminum)

Dimensions:

102mm*102mm*H76mm
Mounting dimension:
93mm*93mm

Color temperature

3000K

Available colors

□ Matt White (03349W)
■ Matt Black (03349B)

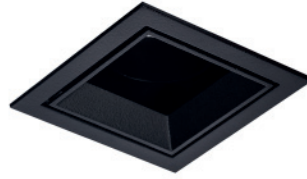


NEW-130-10W

Ceiling Recessed

LED

Technical parameters:	Dimensions:	Color temperature	Available colors
Light source/Power: LED Philips LUXEON 3030 2D 9x1.07W	Ø114mm*H72mm Mounting dimension: Ø102mm	3000K	<input type="checkbox"/> Matt White (03350W) <input checked="" type="checkbox"/> Matt Black (03350B)
Lumens/CRI/Beam angle: 1120 lm/CRI 80			
IP rating: IP44			
Power supply: Tridonic 10 W, 500mA			
Material: Metal (aluminum)			



JANE OK-GU10

Ceiling Recessed

GU10

Technical parameters:

Light source/Power:
GU10, 1x50W (not included)
IP rating: IP20
Power supply: not required
Material: Metal (aluminum)

Dimensions:

82mm*82mm*H120mm
Mounting dimension: 76mm*76mm

Available colors

Matt White (03351W)
 Matt Black (03351B)



NEW-130 MINI-6W

Ceiling Recessed

LED

Technical parameters:

Light source/Power:
LED Philips LUXEON 3030 2D
6x1.07W
Lumens/CRI/Beam angle:
663 lm/CRI 80
IP rating: IP44
Power supply:
Tridonic 10 W, 500mA
Material: Metal (aluminum)

Dimensions:

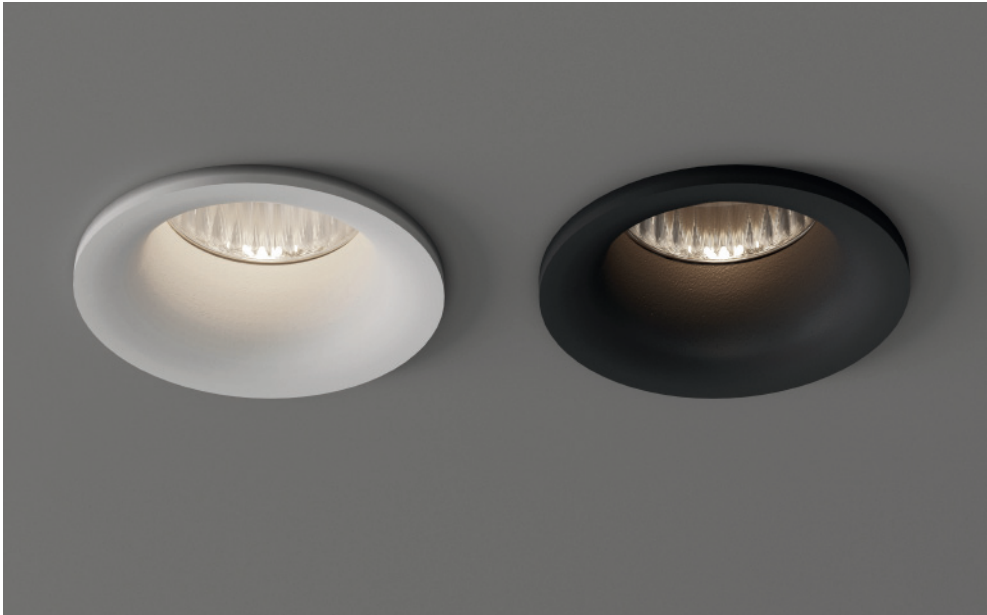
Ø92mm*H55mm
Mounting dimension: Ø83mm

Color temperature

3000K

Available colors

□ Matt White (03363W)
■ Matt Black (03363B)



DE-200 F-6W

Ceiling Recessed

LED

Technical parameters:

Light source/Power:
LED Bridgelux V8 Array 1x6.1W
Lumens/CRI/Beam angle:
817 lm/CRI 80/50° reflector
IP rating: IP54
Power supply:
SELF 7 W, 350mA
Material: Metal (aluminum)

Dimensions:

Ø59mm*H50mm
Mounting dimension: Ø50mm

Color temperature

3000K

Available colors

□ Matt White (03352W)
■ Matt Black (03352B)





GD-1641

Ceiling Recessed
GU10

Technical parameters:

Light source/Power:
GU10, 1x50W (not included)
IP rating: IP20
Power supply: not required
Material: Metal (aluminum)

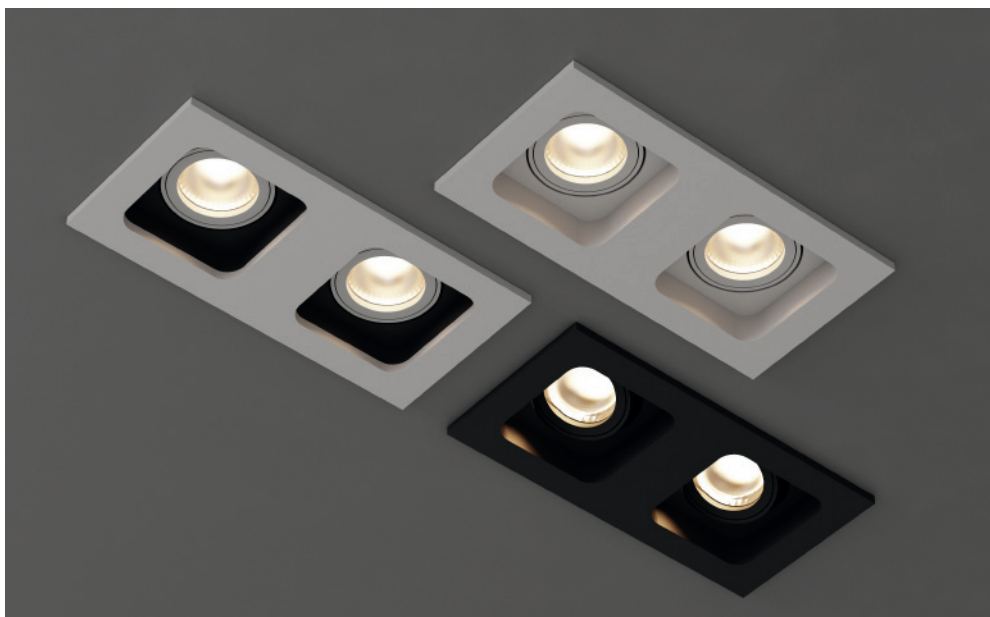
Dimensions:

100mm*100mm*H100mm
Mounting dimension: Ø89mm

Available colors

- Matt White (03353W)
- Matt Black (03353B)
- Matte White /Matte Black (03353W/B)
- Aluminium (03353A)





GD-1642

Ceiling Recessed
GU10



Technical parameters:

Light source/Power:
GU10, 2x50W (not included)
IP rating: IP20
Power supply: not required
Material: Metal (aluminum)

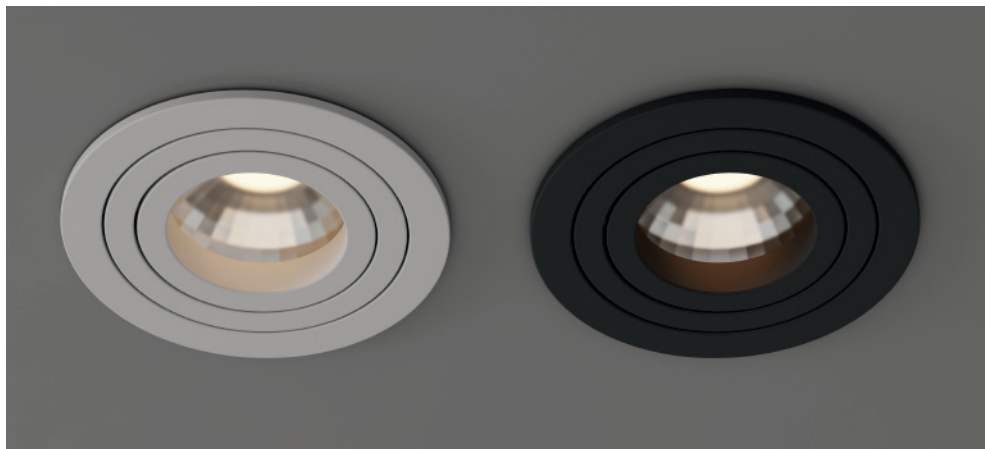
Dimensions:

100mm*200mm*H140mm
Mounting dimension: Ø89mm*100mm

Available colors

- Matt White (03354W)
- Matt Black (03354B)
- Matte White /Matte Black (03354W/B)
- Aluminium (03354A)





DL-5600-GU10

Ceiling Recessed

GU10



Technical parameters:

Light source/Power:
GU10, 1x50W (not included)
IP rating: IP20
Power supply: not required
Material: Metal (aluminum)

Dimensions:

Ø92mm*H100mm
Mounting dimension: Ø82mm

Available colors

Matt White (03355W)
 Matt Black (03355B)





DL-5601-GU10

Ceiling Recessed

GU10

Technical parameters:

Light source/Power:
GU10, 1x50W (not included)
IP rating: IP20
Power supply: not required
Material: Metal (aluminum)

Dimensions:

92mm*92mm*H110mm
Mounting dimension: Ø82mm

Available colors

Matt White (03356W)
 Matt Black (03356B)





DL-5602-GU10

Ceiling Recessed

GU10

Technical parameters:

Light source/Power:
GU10, 2x50W (not included)
IP rating: IP20
Power supply: not required
Material: Metal (aluminum)

Dimensions:

174mm*92mm*110mm
Mounting dimension: 162mm*82mm

Available colors

Matt White (03362W)
 Matt Black (03362B)





HALO OK 9W

Ceiling Recessed

LED



Technical parameters:

Light source/Power:
LED Bridgelux V8 Array 1x8.9W
Lumens/CRI/Beam angle:
1135 lm/CRI 80/48° reflector
IP rating: IP20
Power supply:
Tridonic 10 W, 500mA
Material: Metal (aluminum)

Dimensions:

Ø105mm*H55mm
Mounting dimension:
Ø98mm

Color temperature

3000K

Available colors

Matt White (03357W)
 Matt Black (03357B)





FASHION-GU10

Ceiling Recessed

GU10

Technical parameters:

Light source/Power:
GU10, 1x50W (not included)
IP rating: IP20
Power supply: not required
Material: Metal (aluminum)

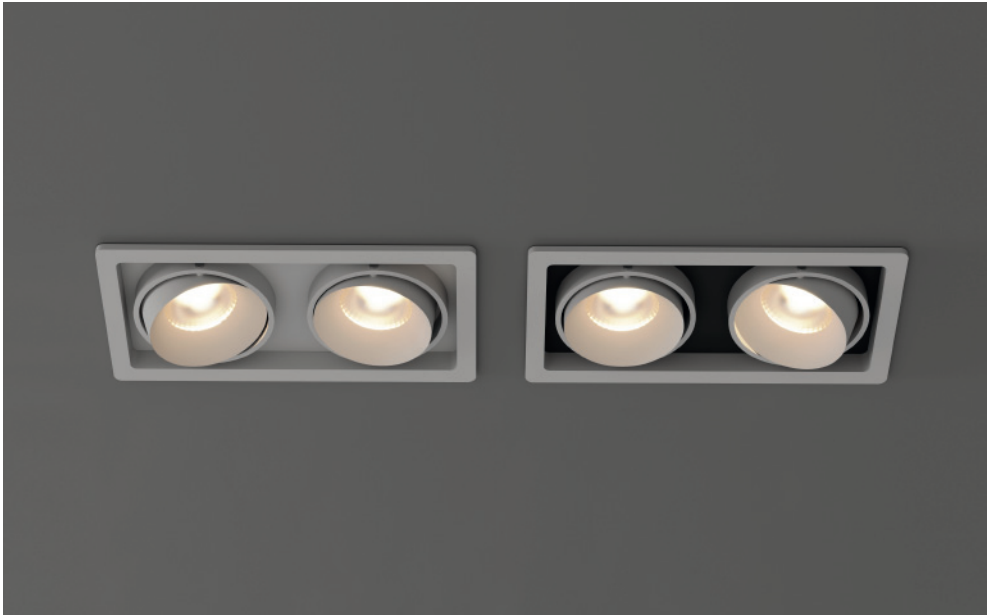
Dimensions:

105mm*105mm*80mm
Mounting dimension: 95mm*95mm

Available colors

Matt White (03364W)
 Matte White /Matte Black
(03364W/B)





FASHION 2-GU10

Ceiling Recessed

GU10

Technical parameters:

Light source/Power:
GU10, 2x50W (not included)
IP rating: IP20
Power supply: not required
Material: Metal (aluminum)

Dimensions:

198mm*104mm*80mm
Mounting dimension: 188mm*95mm

Available colors

Matt White (03369W)
 Matte White /Matte Black
(03369W/B)





DL-6600 GU5.3

Ceiling Recessed

GU5.3



Technical parameters:

Light source/Power:
GU5.3, 1×50W (not included)
IP rating: IP20
Power supply: not required
Material: Metal (aluminum)

Dimensions:

Ø98mm*80mm
Mounting dimension: Ø92mm

Available colors

Matt White (03373W)
 Matt Black (03373B)





DE-200 FIX-9W

Ceiling Recessed

LED

Technical parameters:

Light source/Power:
LED Bridgelux V8 Array 1x8.9W
Lumens/CRI/Beam angle:
1135 lm/CRI 80/48° reflector
IP rating: IP54
Power supply:
Tridonic 10W 500mA
Material: Metal (aluminum)

Dimensions:

Ø82mm*54mm
Mounting dimension:
Ø68mm

Color temperature

■ 3000K

Available colors

Matt White (03374W)





EVA FIXED HIDE-9W

Ceiling Recessed

LED

Technical parameters:

Light source/Power:
LED Bridgelux V8 Array 1x8.9W
Lumens/CRI/Beam angle:
1029 lm/CRI 80/50° reflector (03379W)
1068 lm/CRI 80/50° reflector (03380W)
IP rating: IP44
Power supply:
ACTEC AS 10W Triac dimmable 500mA
Material: Metal (aluminum) + plastic

Dimensions:

169mm-106mm*80mm
Mounting dimension: Ø114mm

Color temperature

■ 3000K (03379W)
■ 4000K (03380W)

Available colors

Matt White





SKY R M-13W

Ceiling Recessed

LED

Technical parameters:

Light source/Power:

LED Bridgelux 13.3W

Lumens/CRI/Beam angle:

1068 lm/CRI 80 (03381W)

1168 lm/CRI 80 (03382W)

IP rating: IP44

Power supply:

ACTEC AS 15W

Triac dimmable 500mA

Material: Metal (aluminum) + plastic

Dimensions:

Ø135mm*58mm

Mounting dimension: Ø127mm

Color temperature

■ 3000K (03381W)

■ 4000K (03382W)

Available colors

Matt White





HBT FRODO M-9W

Ceiling Recessed

LED

Technical parameters:

Light source/Power:
LED Bridgelux V8 Array 1x8.9W
Lumens/CRI/Beam angle:
926 lm/CRI 80/47° reflector
IP rating: IP20
Power supply:
ACTEC 10W Triac dimmable, 500mA
(included)
Material: Metal (aluminum) + plastic

Dimensions:

Ø109mm*55mm
Mounting dimension:
Ø102mm

Color temperature

3000K

Available colors

Matt White (03376W)
 Matt Black (03376B)





AGILE SQ

Wall recessed

LED

Technical parameters:	Dimensions:	Color temperature (LED module):	Available colors (frame):
(LED module + frame, sold separately)	frame: 75 x 75 x 6mm	 3000K (03385W)	<input type="checkbox"/> White (03384W)
LED 1x1.5W, 500mA	LED module: Ø71mm x 45mm	 4000K (03386W)	<input checked="" type="checkbox"/> Black (03384B)
157lm/CRI90 (3000K)	Mounting dimension:		<input checked="" type="checkbox"/> Champagne (03384C)
167lm/CRI90 (4000K)	Ø68mm x 70mm		
IP rating: IP20			
Power supply: included			
Input voltage: 230VAC			
Material (frame): Alu Die-Cast			





AGILE R

Wall recessed
LED

Technical parameters:	Dimensions:	Color temperature (LED module):	Available colors (frame):
(LED module + frame, sold separately)	frame: Ø78 x 8mm	■ 3000K (03385W) ■ 4000K (03386W)	■ White (03383W) ■ Black (03383B) ■ Champagne (03383C)
LED 1x1.5W, 500mA	LED module: Ø71mm x 45mm		
157lm/CRI90 (3000K)	Mounting dimension:		
167lm/CRI90 (4000K)	Ø68mm x 70mm		
IP rating: IP20			
Power supply: included			
Input voltage: 230VAC			
Material (frame): Alu Die-Cast			





WE-1906 MAX G2 4,6W

Wall recessed

LED

Technical parameters:

Light source/Power:
LED Bridgelux V6 Array 1x4.6W
Lumens/CRI/Beam angle:
250 lm/CRI80
IP rating: IP43
Power supply:
HEP 7W, 500mA
Material: Metal (aluminum)

Dimensions:

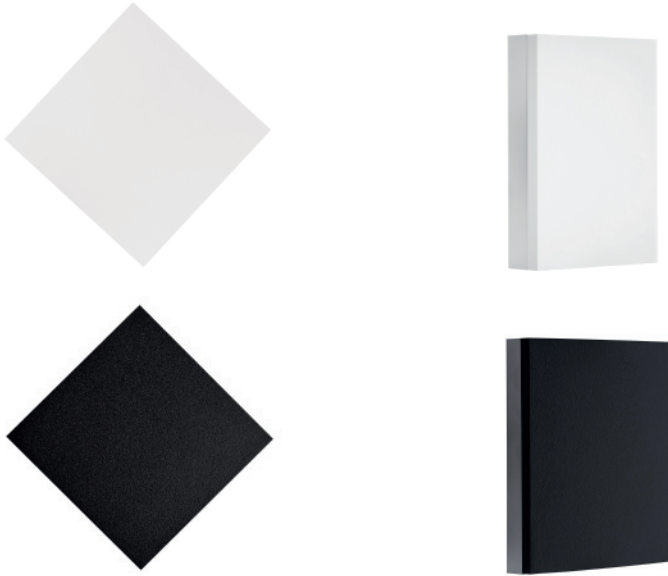
Ø84mm*40mm
Mounting dimension:
insert in plasterboard Ø50 mm,
socket Ø100 mm in concrete
included

Color temperature

3000K

Available colors

□ Matt White (03358W)
■ Matt Black (03358B)



WE-1907 MAX G2 4,6W

Wall recessed

LED

Technical parameters:

Light source/Power:
LED Bridgelux V6 Array 1x4.6W
500mA
Lumens/CRI/Beam angle:
250 lm/CRI80
IP rating: IP43
Power supply:
HEP 7W, 500mA
Material: Metal (aluminum)

Dimensions:

84mm*84mm*40mm
Mounting dimension:
insert in plasterboard Ø50 mm,
socket Ø100 mm in concrete
included

Color temperature

3000K

Available colors

□ Matt White (03359W)
■ Matt Black (03359B)



OUT120 CS-E27

Ceiling Surface

E27

Technical parameters:

Light source/Power:

E27 (not included)

Power supply: not required

Material: Metal (aluminum) + glass

Dimensions:

Ø120mm*205mm

Available colors:

Matte White (03372W)

Matte Black (03372B)





OUT120 WS-E27

Wall surface

E27

Technical parameters:

Light source/Power:

E27 (not included)

Power supply: not required

Material: Metal (aluminum) +glass

Dimensions:

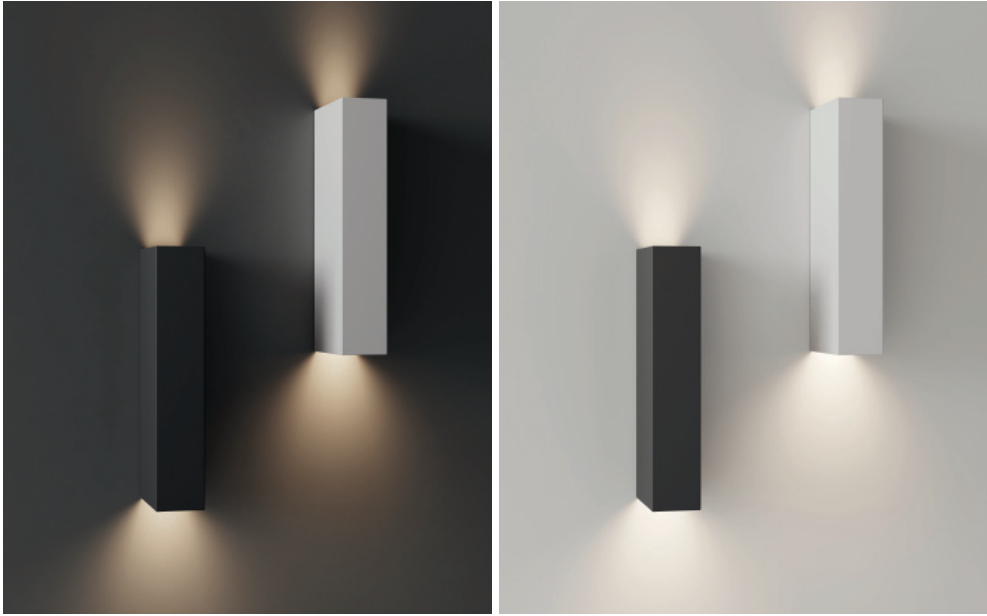
Ø120mm*158mm*213mm

Available colors:

Matte White (03371W)

Matte Black (03371B)





SLIM FIT Y-9W

Wall surface

LED

Technical parameters:

Light source/Power:
LED Bridgelux V6 Array 2x4.6W
Lumens/CRI/Beam angle:
2x450 lm/CRI 80
IP rating: IP65
Power supply: KGP 10W
500mA
Material: Metal (aluminum)

Dimensions:

230mm*43mm*90mm

Color temperature

3000K

Available colors

Matt White (03375W)
 Matt Black (03375B)



ZARlight

HIGH QUALITY LIGHTING
SOLUTIONS

ELEGANT AND FUNCTIONAL
PRODUCTS

RELIABILITY AND LONG LASTING
EFFICIENCY

3 YEARS WARRANTY

3D MODELS AVAILABLE
ON WEBSITE:

WWW.ZARLIGHT.COM

ZARlight

UL. KOSYNIERÓW 81
20-152 LUBLIN, POLAND

PHONE: +48 606 159 416
E-MAIL: ZARLIGHT@ZARLIGHT.COM

WWW.ZARLIGHT.COM
WWW.ZARLIGHT.COM.UA